

Charity Auction at Mori Art Museum a Success

A charity auction held with the assistance of Sazaby's Japan was held at Mori Art Museum on December 3. Many artists sympathetic to the auction's theme from Japan as well as overseas contributed their works, making the event a display of the new possibilities of art and charity. BMW MINI ONE designed by the artists Katsuhiko Hibino and Mika Ninagawa, the only one of its kind in the world, enjoyed much popularity before falling under the hammer at the generous price of 2,300,000yen and 2,200,000yen each. All of the proceeds will be used by KEF to help children around the world develop their creative skills.



Tamagawa Takashimaya Shopping Center "White Angel Project" is on until December 25 (Sat.)

White Angel Project, a charity event that started with the wish to deliver a peaceful Christmas to children around the world, is in its third year this year at Tamagawa Takashimaya S・C. Until December 25, you can participate in the project by hanging white feathers and messages to children around the world on a Christmas tree, and contributing to their welfare through a charity box. The proceeds from this project have supported the Cambodian Aids Orphans Project for the past two years, and a photo gallery of the Cambodian children is open for viewing.

Both "Ritsuko Shirahama", a women's wear brand, and "KIDS EARTH FUND" are printed on tags.

Ms. Ritsuko Shirahama is a dress designer who has been participating in KEF activities for 15 years. She has just released special products of her brand "Ritsuko Shirahama" for spring and summer 2005. These products are denim, jackets, pants, T-shirts, etc. inlaid with applique and badges which use paintings by children, and both names of "Ritsuko Shirahama" and "KIDS EARTH FUND" are printed on their tags! Through these products, Ms. Shirahama conveys her message, "Violence can not create anything." 5% of the sales of these products will be contributed to KEF.



Ms. Shirahama (right) and Torii

Charity Wine Party

The third charity wine party, which has been held every first Thursday of the month, was held on December 2. More than 200 people participated in this event so far and have contributed to the charity. The theme for December was, of course, Christmas! Christmas pictures drawn by children from all over the world, a large Christmas tree, grilled turkey and wine just made the party Christmas party. We reported on our recent activities such as emergency assistance to Niigata, showing a video. There are also fun events coordinated by the guests every time. These 3 times, we have had Bosa Nova, Piano, Songs, Tea Ceremony, a Puppet Show, etc. Please look forward those events as well!

Date: Every first Thursday of the month (Next: on February 3, 2005)
Venue: KIDS EARTH Gallery (3-29-9, Ebisu, Shibuya-ku, Tokyo)

Please contact KEF by Tel or E-mail, if you would like to participate.



2005 calendar is made!

Every year, many companies make charity calendars with arts designed by children. "Q SAI Co., Ltd." and "Chiquita-Unifruity Japan Ltd." made one of 2005. Those calendars are handed out to their customers.

NEW MEMBERS

These are KIDS EARTH FUND's new members since Sep. 1 until Nov. 30 (in alphabet order)

Individual Membership

Ms. Asako Suno / Ms. Kumiko Ishii / Mr. Takayuki & Ms. Keiko Sugimura / Mr. Yoshiaki Oomura / Ms. Yoshiko Maekawa

Corporate Membership

Arflex Japan Ltd. / Coleman Japan Co., Ltd.

Foster Parents

(Foster parents of children at KIDS EARTH HOME, schools for street children, in Vietnam)

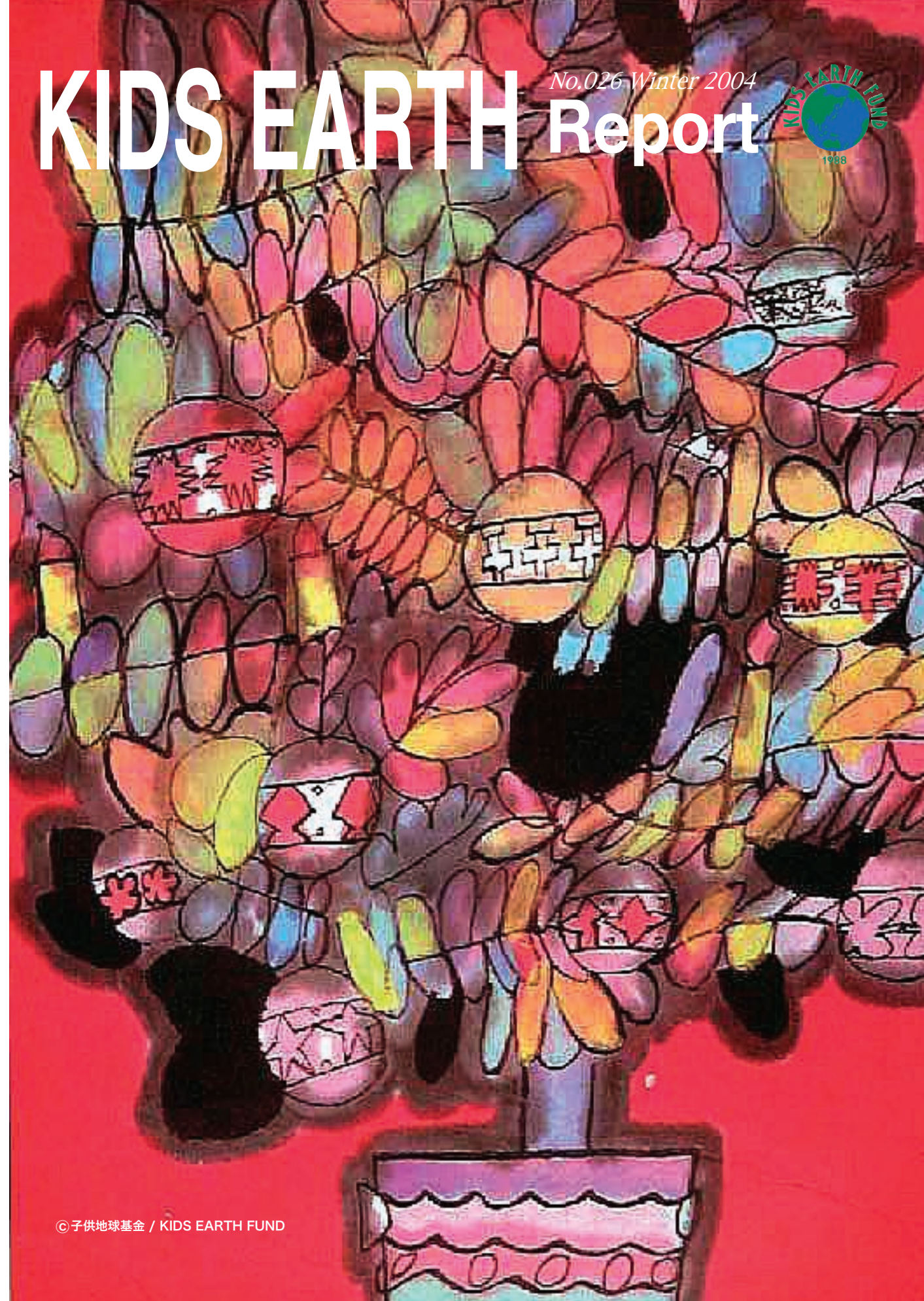
Ms. Akari Kimoto / Ms. Fumi Nakai / Ms. Izumi Kamiya / Mr. Nobuyuki Nishinaga & Ms. Yukie Nishinaga / Mr. Yuya Hioki / 1 anonymous

Big Family Members

Ms. Kumiko Ishii / Ms. Naomi Tanabe / 2 anonymous

KIDS EARTH Report

No.026 Winter 2004





Emergency Support for the earthquake victims in Niigata area

On the evening of October 23, a destructive earthquake, intensity 7, occurred in Niigata Chuetsu area, and many people were struck. From Oct. 30 to Nov. 3, 4 KIDS EARTH FUND (KEF) staff (Harumi Torii: founder, Makiko Nagata, Miho Takahashi: officer, Hidemasa Takahashi: volunteer) went to Ojiya-City, Niigata, by KIDS EARTH CAR (KEC), and joined supportive activities. Because of fears of destructive shaking, profound shocks of losing houses, and additional fears of afterquakes...many children didn't want to leave their parents even several days after the quake. In some area, enough supplies hadn't arrived yet. Focusing on those areas, we handed out supplies, helped with cleaning of destroyed houses and so on. Also, we talked with children and set up "a play room" to ease their mental damage and to make them feel relieved.



■ A Play Room



We set up "A Play Room" at one emergency shelter, putting some childlike wood toys. It was a kind of healing room for children for some moments. Children gradually showed smiles when they saw those toys and played with them.

■ Cleaning a destroyed house



"I'd like to clean up my home to offer incense sticks to my husband." One lady in her 70's said. She has been living alone since his death. The house lost its walls and was partially destroyed. We helped cleaning the room of family altar and kitchen, and finally secured some space for her, she showed relief in her face.

■ Finding relatives

"I can't get contact with my brother's family, though they live near me" the lady let out. Soon after, we sought them by KEC and then she could meet them in safety! She seemed relieved but they are still living a different shelter from each other.

Visit to Yokohama city hall

On the way to Niigata, we came across Mr. Hiroshi Nakada, the Yokohama mayor, and his staff by accident. Since then, we had cooperated each other in Niigata. Akagi Rinkan Gakuen is a big accommodation run by Yokohama City, and it is now an emergency evacuation shelter. It was also our base during the activities. Local families in the town that was covered with sediment, all the residents of one village...many victims came and stayed there. On November 26, KEF's staff visited Yokohama City hall, and handed a part of the donations to the mayor as expenses of meals for victims at the facility.

Donation and provision of relief supplies

Thank you very much for your donation! We sincerely appreciate your support.

Total Donation	943,775 yen (by November 30)
(Breakdown of expenses)	
Purchase	141,849 yen foods, towels, etc.
Donation	801,926 yen (for expenses of meals of victims at a shelter of Akagi Rinkan Gakuen)

We received a lot of products from many companies and handed those out to the victims. Chiquita-Unifruitti Japan Ltd. (75 blankets), Coleman Japan Co.,Ltd.(sleeping bags:16 full sized, 24 child-sized, 25 jackets, 1 camp material set), IKEYA (wood toys), Tomy Co.,Ltd. & Tomy Direct Co.,Ltd. (toys, games), Parents at Unida International School (sweets and children's clothes), Mojundar and Company (insurance 4 persons 7 days) etc. (in Alphabet order) Also, one lady sent us 3 bags of nappy.

All of those were handed out to the victims who were under a severe situation.

November : Aiiku Yogo School for children with special needs.

In November, when autumn progresses, KEC visited Aiiku Yogo School for disabled children in Minami Azabu, Minato-ku, and conducted workshop for paper making. As the staff members lined up a set of equipment for paper making in the schoolyard and displayed sample handmade paper on the windows, interested children started to gather accompanied by teachers and their mothers. In the workshop, the children put glittering sequins, origami cut in small pieces, yarn, etc. on raw paper in their own way, and proceeded to the finish. One of the male students, who really liked this work, brought his toy blocks and pressed them in the paper! Such new ideas were created one after another unlike usual paper making workshops and many wonderful papers were made with leaves that fell down from trees, sand, clay, and so on. All the participating children, mothers and staff members enjoyed the beautiful autumn day.



KIDS EARTH CAR filled with supplies.



Kids Earth Home Tokyo New Program

We would like to introduce again, the original program of our workshop at KIDS EARTH HOME Tokyo. This time, the theme of the workshop was to "Listen".

Program 2 (Listen Carefully !)

Listen Carefully with your eyes closed. No talking with your friends around. And what can you hear? Singing birds, sound of the wind, someone's footsteps... if you can hear the sound that you usually don't recognize, you may now be able to listen to your mind, too.

Workshop at the gallery...

JETTE TON ARME (Put Down Weapons !)

Medecins du Monde (Physicians of the World: Headquarters/ Paris, France) and KEF held a joint workshop. It started with a short drama performed by Covenant Players on the theme of peace. The program moved on to the workshop where, under the guidance of artist, Mr. Tomoatsu Takase, participating children remade cap pistols into fantastic art objects. Through this workshop, the children sent out their message for peace and called out "No more weapons!" in their way.



KIDS Care Cambodia ~ The Home for AIDS orphans ~ Latest News

We've got Christmas presents !



Though they aren't used to celebrating Christmas in Buddhism and an ever lasting country, Cambodia, children in the Home enjoyed the Christmas party on November 19 together with Torii, founder, on that day. They were delighted to sing Christmas songs and receive Christmas presents in the stockings under the big Christmas tree.

Children's favorite things and poor things -from a diary of Chiaki Kondo, local staff-

Children were absorbed in putting water into a balloon. The balloon burst, and the floor was filled with water..., but they wiped up the wet floor. Girls seem to be poor in math. When I asked Sreyneath and Puy, kids in the kindergarten, what they studied today, Puy answered with a smile, 'I learn one word but forget another.'



Column

DEAR KIDS, DEAR THE EARTH vol. 8

Sculptor / Adviser to Kids Earth Fund
Ren Makabe

You would think that KIDS EARTH FUND is a small voluntary group, but in fact it's quite large. Large not just in the sense of human resources or funds, but in terms of its goals and what it's aimed at. After all, it's the children of the world that are the group's focus, and that's no ordinary task. In the beginning the projects were about underprivileged children overseas, but since they realized that Japanese kids are also under a lot of pressure, the group has started a project to care for their psychological needs too. Kids cheer each other up by exchanging drawings, and by extension support and helping each other, all the while expressing their own psychological needs - each picture has these three beautiful dimensions. What a great project. It is different from a project with a predetermined purpose, like the one we had to draw picture which would send a message of support to the children of New York. The theme is less structured this time. It attempts to reach the deep psyche of the children while pursuing new forms of communication with adults. It's an overwhelming experiment, but a fascinating one. This may be suggesting the form that art might take in the future. KIDS EARTH CAR Project could be said to be the prototype project for development of art and science based on children's drawings. We'll be focusing on the future through studies of deeper communication with children.

Many of the kids I met through this KEC Project were experiencing the reality of being shown a tangible expression of their life. Putting it differently, it was cyber-punk. But they were attempting to believe in something, and to me it looked like they were trying to find a dream for the future.

I thought I'd like to feel their dreams in a more real way. I also thought about what dreams we, the adults, could have together with them. That of course differs for each person. Some kids may want to leave a hospital and eat some tasty gyoza dumplings; others have never been allowed to leave their bed since they were born, nor been to a zoo. There was a girl whose hope was to become an illustrator. Another girl who had just lost her father had put her unexpressed feelings towards him in her drawing. I wonder what dreams we could have together; not tiny individual dreams about ourselves but the kind of a big dream about the future that we could all share. I think KEF is about to show us the answer to this question. But we've only started on the road to find that dream. I'm very much looking forward to seeing those kids again.



Exhibition

● Tokyo (Higashiyamato)

10 / 27 (Wed.) - 12 / 28 (Tue.)
Honda Clio Shin Tokyo Higashiyamato

● Osaka (Osaka city)

10 / 1 (Fri.) - 12 / 25 (Sat.)
Rihga Royal Hotel (Osaka)
Sponsored by Palais-Royal

● Tokyo (Tachikawa)

10 / 15 (Fri.) - 10 / 25 (Mon.)
Honda Clio Dream Pia Tachikawa

● Tokyo (Setagaya)

12 / 1 (Wed.) - 12 / 29 (Tue.)
Nissan Koseikai Tamagawa Hospital

● Tokyo (Futakotamagawa)

11 / 17 (Wed.) - 12 / 25 (Sat.)
Tamagawa Takashimaya shopping center