

NEWS

Christmas Charity Party at the Westin Tokyo

The Westin Tokyo is known to put up a big Christmas tree in its' beautiful lobby in December every year. Christmas is the time for the Christmas spirit of sharing with others, and in the hotel, KEF received donations from many people at this charity event.

KEF held a Christmas Mini Concert on one weekend in December where guests enjoyed listening to music, as well as, looking at Christmas paintings by children from China, Indonesia and Hungary. This year again, delicious cookies that were filled with love and warm feelings were baked by the pastry chefs of The Westin Tokyo. They were sold for charity. A number of participants bought these cookies for their loved ones, family members and friends. The funds raised by the sales of cookies will be used by KEF to improve the art workshop programs that are intended to offer children mental health care.

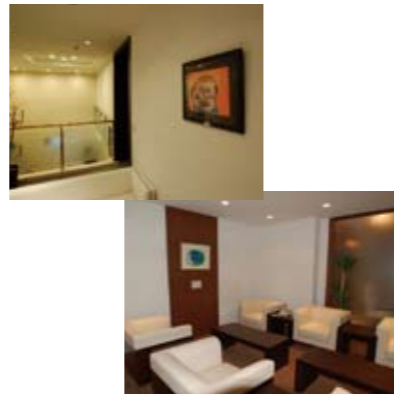


Kids Art Display in Office Space The Art Lease Program

Tokyo, Chiyoda Ku. In an area of skyscrapers, not far from the National Diet building, on one floor of an office building, you can see the vividly colored paintings of children from all over the world. As the elevator opens, on the opposite wall is a painting in dazzling primary colors by a child from Ireland. In the reception office is "Healthy Earth" painted by a child from Japan. The office space is made splendid by each of them and the air is as if were filled with the power of children.

This is one of the support programs of the KEF - the Art Lease Program. By leasing children's paintings from KEF's collection for a certain period of time, we are getting support for our activities from other people who would also like to lend a helping hand to children. This time the investment consulting RIO Group started displaying children's paintings, from January 2008 onwards.

In addition to the RIO Group there are other companies, individuals and cafes taking part in this Art Lease Program.



What is the art lease program?

KEF lends selected children's paintings for a certain period of time and lets the public view them. This unique program is available for corporations, research institutions, schools, hospitals, government, restaurants, stores, and individuals.

1.How to take part in this art lease program

Kindly select your favorite paintings from the lease collection. Please visit KIDS EARTH Gallery in Ebisu to look at the list and view the art collection.

2.Donation (*all lease funds are donations) Small size from 3,000 yen/ month
Large size from 5,000 yen/ month *Handling fee is at your own expense

3.Lease period: 6 months+

KEF welcomes its 20th anniversary

**20th anniversary memorial event -Let's redraw the earth with children's paintings-
For one week from Friday April 18th to the 24th at Tokyo Midtown in Roppongi**

In spring of 2008, a fun filled charity event where people can participate will be held at Tokyo Midtown for a week to commemorate the 20th anniversary of KEF. Starting with the "KIDS EARTH Gallery" where paintings drawn by children from all over the world were displayed, a video of the activities of KEF during the last two decades will be shown, and art workshops where children will take part in to draw paintings on large canvases, while imaging the earth of the future will be held. It is an event where not only adults but also children can enjoy experiencing a charity event. We are looking forward to seeing you at the celebration.

Organizer: KIDS EARTH FUND/ The Asahi Shimbun (Asahi Newspaper)

Partner: Tokyo Midtown

Schedule: Friday April 18th ~ Thursday 24th, 2008

Place: Tokyo Midtown B1F - Main Venue: Atrium, Courtyard and Lawn Garden

Fee: Free

Talk sessions by famous people at the special stage in the main venue, Atrium

One to three guests and Harumi Torii, the founder of KEF, will talk about what we can do for the earth, and what we can do from Japan, including the 20-years of history of KEF. In order to let children participate in society and be more pro-active in caring for the earth and themselves, the guests will talk about the children, earth and environment.

Guests (preliminary): Junko Igarashi (actress), Atsushi Watanabe (actor), Saya Takagi (actress), Shigeaki Saegusa (composer), Ryo Hato (management consultant/author), Hiroshi Harashima (professor of Tokyo University), Sumiko Iwao (professor emeritus of Keio University and Musashi Institute of Technology), and other special guests to be announced.

Schedule: Friday April 18th ~ Thursday 24th, 2008, daily from 3 p.m. to 4 p.m.

NEW MEMBER

There are KIDS EARTH FUND's new members since 1 Dec 2007 until 20 FEB 2008.

(Individual Membership)
Ms. Keiko Yokoyama

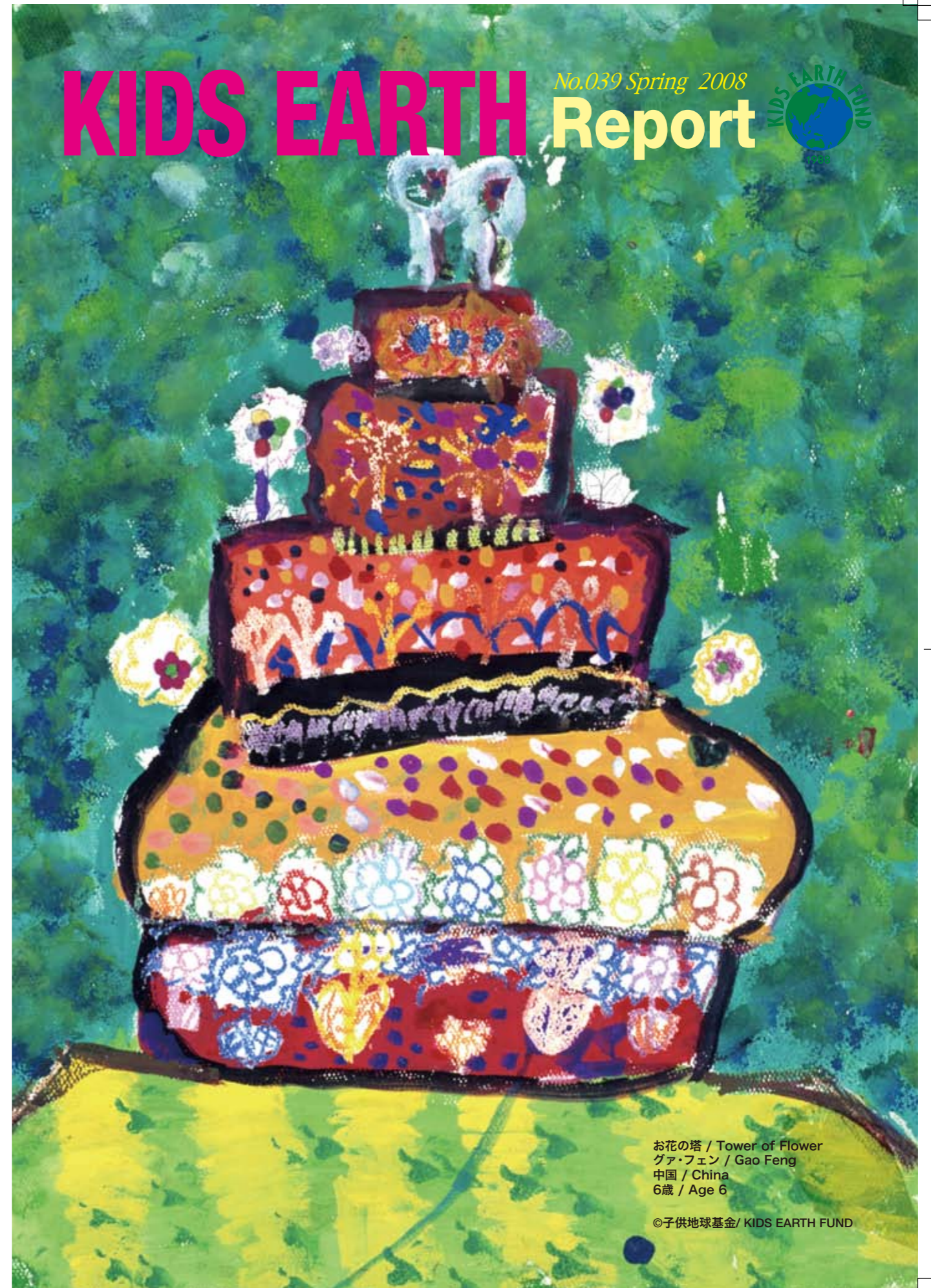
(Corporate Membership)
Amel The shop

子供地球基金/KIDS EARTH FUND 3-25-2, Ebisu, Shibuya-ku, Tokyo 150-0013 TEL:03-5449-8161 / FAX:03-5449-3962
E-mail: info@kidsearthfund.org / URL: http://www.kidsearthfund.org/



KIDS EARTH Report

No.039 Spring 2008



お花の塔 / Tower of Flower
グァ・フェン / Gao Feng
中国 / China
6歳 / Age 6

©子供地球基金/ KIDS EARTH FUND

KIDS EARTH HOME Project

KIDS EARTH FUND (KEF) visited KIDS EARTH HOME (KEH) in Cambodia and Vietnam from February 9. We delivered relief supplies and held an art workshop.



Children and their artwork at KEH in Vietnam

This time at the art workshop with children attending KEH in Vietnam and Cambodia, we asked them to freely express themselves by thinking about the flowers, trees and houses around them and to draw with the colorful marker pens and color pencils.

KEH in Cambodia completed its rebuilding last fall and has just recently added play equipment such as swings and seesaws in the school ground. The number of students who commute a long way to the school has increased, and the children's willingness to study seems to have further heightened.

The works painted at this art workshop included the new school building and scenery of students enjoying volleyball in the school ground. To bring more smiles from children, we will continue to support them both physically and spiritually.



Children in Cambodia



Tapestry Project Spreading Across the World

"Tapestry Project" commemorating the 20th anniversary of KEF has been launched.

The tapestry which is a collection of canvases painted by children throughout the world will be displayed at various locations in the world to send out messages from children.

The first exhibition which was held at a Catholic church in Ho Chi Minh City, Vietnam drew a large audience ranging from children to adults. They were interested to see, in addition to those from Vietnam, the paintings from distant countries such as Cambodia, Japan, China, Philippines, Pakistan, Croatia and Senegal. Each painting has its uniqueness. "Where is this country?" "What kind of children are there?" They seemed to be able to feel a connection to the world.

At this church, we have decided to hold an art workshop periodically. The network of Kids Helping Kids, which is KEF's motto, will continue to expand through the tapestry project.



KIDS EARTH CAR Project

Merry Kids Christmas Project

Christmas is the special season every year which children have been waiting for. At the end of year 2007, KEF donated Christmas presents to about 1,300 children in over 16 hospitals and institutions commencing with Tokyo. In Aiiku Yogo School, when children were handed presents from the volunteers, shouts of joy arose from children. Many more children, who have also received picture books in a hospital in Tokyo, have been looking at them happily every day. Moreover many volunteers helped with the wrapping work and the project became a success because many people were able to relate to each other.



Wrapping work by volunteers



Hospital staff is also greatly pleased

<<Hospitals and institutions >>
Ai-no-ie Family Home / Aiiku Yogo School / Children's Cancer Association of Japan / Jikei University Hospital / Kanagawa Children's Medical Center / Keio University Hospital / Kokuritsu Musashino Gakuin / Nippon Medical School Hospital / Nonohana-no-ie / Shisei Gakuen / Showa University Hospital / Toho University Omori Medical Center / Tokyo Medical and Dental University Hospital Faculty of Medicine / Tokyo Medical University Hospital / The University of Tokyo Hospital / and others

<<Sponsors>>
Cadbury Japan Limited / Character Research Institute Co., Ltd. / GUERLAIN / KIRIKU Handbell Ensemble / Q'SAI Co., Ltd. / MISSMATCHED JAPAN Co., Ltd. / Newell Rubbermaid Japan Ltd. / sanofi-aventis K.K. / Tombow Pencil Co., Ltd. / We've Inc. / and others



Color pencils and memo pads



Jikei University Hospital - Let's make our original calendar-

This was the first workshop in 2008. At the beginning of the year, we have tried to make calendars at the workshop. Children used four sheets of mat boards, with dates for every three months pasted on them by volunteers. This time was special because children were able to make them for two weeks at a time. No particular was given to them this year, but they were told to draw whatever they liked. Initially, many children were mildly surprised and timid because they had been given no directions, but once they held the colored pencils, they began to draw in a dynamic way.

With imaging how this year would be, happy things, and many colorful calendars had come along.

Only one calendar in the world makes me happy this year!! Since this workshop was filled with children's passion, everyone almost forgot about the cold wind outside.



Kanagawa Children's Medical Center ~Let's draw paintings with your favorite color!~

The first art workshop at Kanagawa Children's Medical Center (KCMC) was held where children were able to draw paintings in any way they wished. 11 children who joined the art workshop created brilliant paintings, while choosing their favorite colors and talking with volunteers. Some children painted on their faces. They exclaimed, "Look at my painting! I drew flowers here!" and "I wish this kind of car could run in a town!" in lively voices.

Those paintings by the children will be displayed in KCMC during the Children's Day week in May. KEF hopes it will give children encouragement and touch all visitors' hearts.



What fun to draw a painting on a big canvas!



Colorful and masterful paintings by children

Column DEAR KIDS, DEAR THE EARTH vol.20

My encounter with KIDS EARTH FUND

Kazuhiro Fujihara Principal, Sugunami Wada Junior High School

There is one memory I recall with a bit of frustration. About 20 years ago, I found a short article about KIDS EARTH Gallery in a women's magazine which mentioned that paintings created by children were being sold to benefit the future of the earth. After reading this, I visited the gallery in Laforet Harajuku at Omotesando for the first time.

At that time, Recruit Shuppan, a publishing company affiliated with Recruit Co., Ltd. was going to close down. I decided to take over management in order to rebuild it into a new multimedia publishing company. This was how Media Factory was first established. I wanted to display a painting in this new company and searched for it. A small painting I found in the magazine had a red flame and the design was also being displayed on the building wall of Laforet Harajuku. The design looked to me like a damaged earth tied with bandage or ribbon, or one receiving presents from the stars. At any rate, it was mysterious. In the painting it says "Happy Birthday Earth," which I thought might be the title.

At the gallery, when I found the original painting, I called to a shop attendant, and exclaimed, "I will take it!" without question, which caught her by surprise. Looking rather perplexed, she answered, "Well, this particular painting is.... Other paintings are for sale but not this one." I insisted, however, and said "I do not care how you do this, but I want it." After a few exchanges, she made a phone call to Ms. Harumi Torii, the founder of the KEF, to ask her for help. "I deeply apologize for the inconvenience but that particular painting is not for sale.... because it was painted by my own son," Harumi, the mother said on the other end of the phone line.

Later on, I learned that she had talked to me from Australia, and that we shared the same 1955 birth year, Sagittarius zodiac sign, and blood type, too. The year after, the picture book, "HAPPY BIRTHDAY EARTH," was published by Media Factory.

Exhibition

- Kyoto-Sakyo-ku
Sun 5/11-Sat 5/24
Le Café 338
- Tokyo-Setagaya-ku
Wed 11/14 - Tue 12/25
Tamagawa Takashimaya S-C
- Tokyo-Setagaya-ku
Wed 11/21 - Fri 12/28
Nissan Tamagawa Hospital
- Tokyo-Meguro-ku
Sat 12/22 - Tue 12/25
The Westin Tokyo
- Tokyo-Chiyoda-ku
Fri 4/18 - Thu 4/24
Tokyo Midtown
KIDS EARTH FUND 20th Anniversary
- Tokyo-Chiyoda-ku
Sun 4/27
A charity concert by SMBC
at Nihon University Casals Hall