

## Christmas Card 2014

New Christmas cards are on sale with the pictures designed by children of Watari-cho, Miyagi prefecture in Japan, as well as by children in Russia and China. Thanks to all of our supporters, 8,071 Christmas cards were purchased last year. These proceeds and the total sum of donations added up to 1,460,560 yen after cards' print costs.

Proceeds of the Christmas cards this year will be used in the Great East Japan Earthquake disaster area, the former Yugoslavia, Vietnam, Cambodia, as well as for the continued support to the children of Syrian refugees. Come this year, it would be fortunate if you could join us in our project.

A Christmas card with an envelope is on sale at 200 yen, and the three-piece set including 3 different designs is also on sale at 500 yen. If you buy more than 50 cards, it is 160 yen per a card.

These cards may be purchased through "KEF GOODIES" page of the KIDS EARTH FUND website.

Cooperated by: MS&AD Unison Smile Club



## White Angel Project 2014

## at Tamagawa Takashimaya Shopping Center

Thanks to the co-sponsorship of Tamagawa Takashimaya S.C, White Angel Project Event is being held this year as well. A 5 meter-long artwork is on display, which was created by the students of Ohkuma Junior High School in Watari-cho, Miyagi prefecture, sending out the message from North-East Japan which is still struggling to recover from the aftermath of the disastrous earthquake and the Tsunami in 2011. There also will be an exhibition of Christmas paintings by the children from many countries around the world.

Several donation boxes will be set up in the venue during the event in an effort to raise funds to keep supporting a lot of children around the world. Charity Goods will be available for purchase from 11:00 am to 6:00 pm on Saturday, December 20th, and Sunday, December 21st. We look forward to seeing you there!

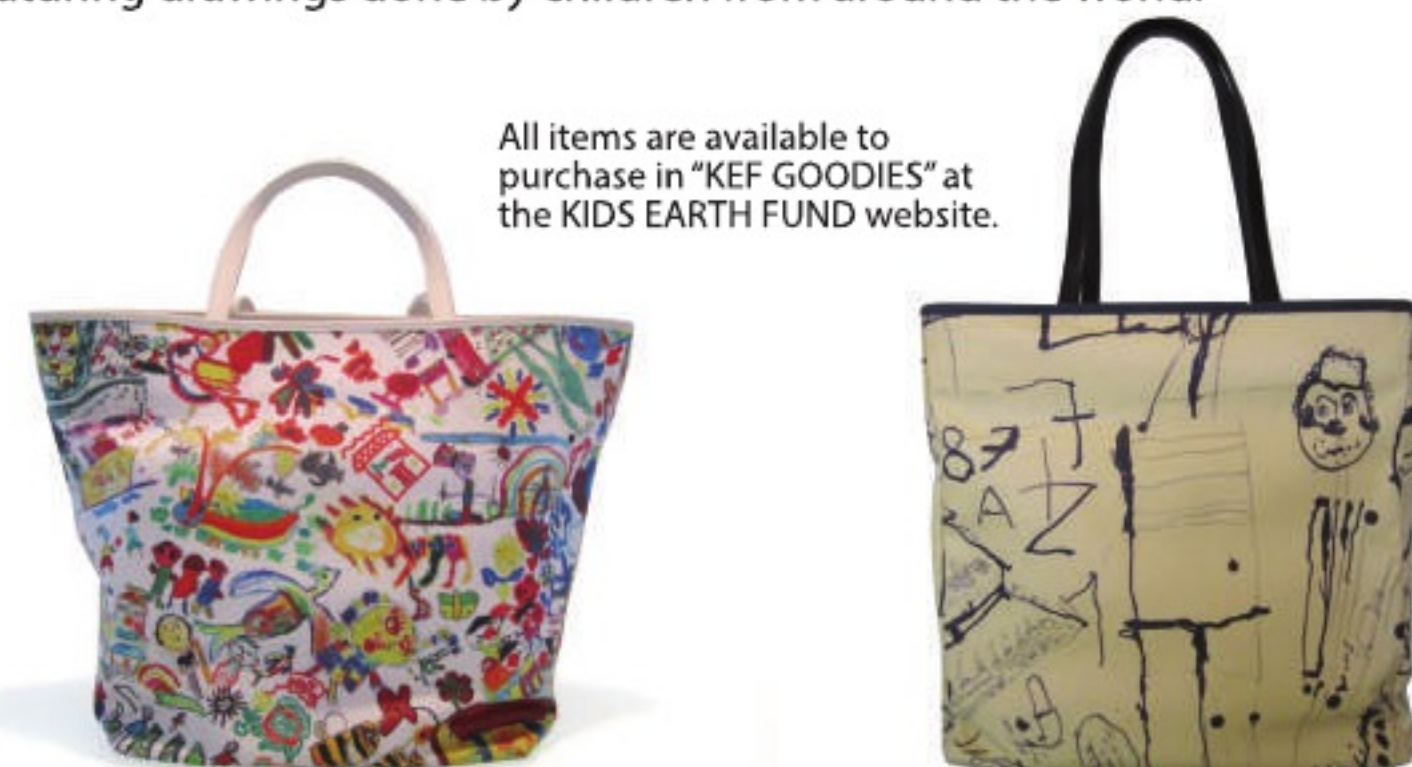
Place: Grand Patio (1F Main Building, Tamagawa Takashimaya S.C)

Period: November 5th – December 25th



## KALEIDO JAPAN Collaboration Bags

The KALEIDO JAPAN collaboration is launching two types of bag, featuring drawings done by children from around the world.



All items are available to purchase in "KEF GOODIES" at the KIDS EARTH FUND website.

<KIDS EARTH FUND Collage Bag>  
These bags feature a cargo pocket, which is perfect for holding several items. Each bag is designed by a child from a different country around the world with interesting patterns for your enjoyment.

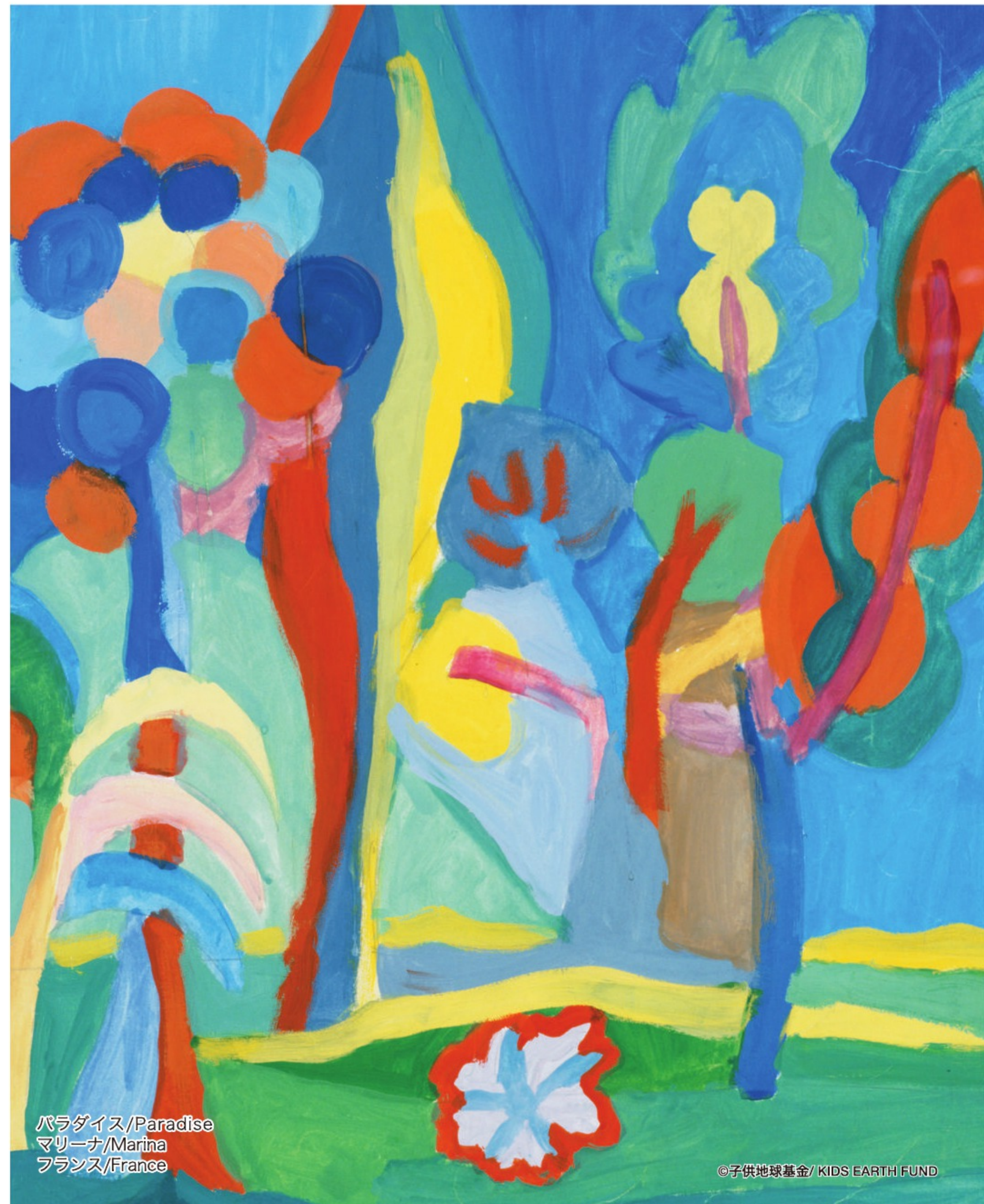
<KIDS EARTH FUND OEKAKI>  
The OEKAKI bag is designed by a boy in Slovakia. Its carrying capacity is perfect for storing a laptop and it is simple to use since the design is perfect for both men and women.



## SHIMOJIMA Thermal/Cold Storage Thermal Bag

Thermal bags, featuring drawings done by children from around the world, are available to buy from SHIMOJIMA Co., Ltd. Part of the profits from sales will go to donations. These thermal bags are available to purchase in "KEF GOODIES" at the KIDS EARTH FUND website.

Price: 1,000 yen /each



パラダイス/Paradise  
マリーナ/Marina  
フランス/France



<http://www.facebook.com/KidsEarthFund>



<http://twitter.com/#!/KidsEarthFund>



# Fundraising Party 2014 on Thursday, September 4



The Fundraising Party was held on Thursday, September 4th, 2014, at Grand Hyatt Tokyo. This year, Mr. Tomoyasu Hotel, a great guitarist, and Mr. Joichi Teshigahara, a famous flower artist and photographer, were invited. The guests enjoyed their exceptional guitar play and flower performance. With the guests' cooperation, contributions amounted to 4,398,946 yen. Proceeds from the party will be used for children at KIDS EARTH HOME in Tohoku, Vietnam, Cambodia, and Croatia. We would like to thank everyone for their understanding and warm support.



## KIDS EARTH HOME in the Republic of Croatia

In KIDS EARTH HOME in the Republic of Croatia, we are focused on the eco-friendly, hands-on workshops for children and the youth. In one of those workshops, we have newly built the "Celtic House" using only natural materials. This project was carried out with the aim to prove that there is a way to build a house that can be both ecological and sustainable for a long time. Instead of going artificial and synthetic, this house is the symbol of our hope for the future prosperity while protecting our environment and our health.



## Art Workshop at Children's Nursing Home, Philippines

The art workshop was held at The Center for Community Transformation, a children's nursing home located 70km away from Manila, the capital of the Philippines. From ages 6 to 10, 62 children in total painted a picture of a rainbow over the sky after a violent typhoon passed through. After the workshop, photos were taken for children with a handmade banner of the KIDS EARTH FUND. Paints, materials, and toys were donated from KEF to the CCT. Supported by Uriel Coloma



## KIDS EARTH HOME Project

### 7/21 Summer Festival with the Glows of Fireflies (Watari-cho, Miyagi)

This annual festival in summer to enjoy the glows of fireflies attracts more than 6,000 people every year. This year, the Sinanen Group sent 30 volunteer workers from Tokyo to manage and operate the festival. KIDS EARTH FUND also assisted the festival management along with Sinanen workers, and held our art workshop there as well.



### 9/14 Art Workshop at ASKUL/LOHACO Booth in "Tour de Tohoku"

During the Tour de Tohoku 2014, KIDS EARTH FUND held an art workshop and had a great time with children using the space at ASKUL/LOHACO booth.



**9/20-27 Ninja Festival (Watari-cho, Miyagi)**  
KIDS EARTH FUND held a workshop at the "Ninja Festival" in Watari-cho, Miyagi prefecture. Children put their own drawings and messages on pieces of leaf-shaped paper and put them up on the "Happy Tree" wishing for the restoration and revival of the region.



### 10/3 Gindako Car Is Coming to Town! (Shinata-gun, Miyagi)

KIDS EARTH FUND held an art workshop for children at the Ohgawara Catholic Kindergarten in Shibata-gun, Miyagi prefecture, on October 5th. Everyone had a great time drawing and painting "My Favorite Things" in their own respective ways. After the workshop, children and participants enjoyed the plates of Takoyaki served hot from the pans by a sponsor company, Gindako.



## KIDS EARTH CAR Project

With the cooperation of Grand Hyatt Tokyo, we have obtained a new KIDS EARTH CAR. For many years, KIDS EARTH CAR has served children who suffered during earthquakes such as the Niigata-Chuetsu Earthquake, the Great Hanshin-Awaji Earthquake, and the Great East Japan Earthquake. The current KEC has a new look and has been very busy supporting the Japanese community. We hope that KEC will expand their activities in the future. We thank Grand Hyatt Tokyo for hosting and all the sponsors for making this event a success.



### Workshops at Children's Wards

We held workshops with children hospitalized in children's wards. They drew pictures on miniature box houses they made. In addition they drew many amazing face shapes on square coasters. They all enjoyed the time of creation.

Activities from July to October 2014:  
7/8, 8/12, 9/9, and 10/23 at Jikei Medical University Hospital  
8/21 at Tokyo Medical and Dental University Hospital  
7/29, 8/25, 9/29, and 10/21 at Kanagawa Children's Medical Center



### Let's Paint the Earth with the Pictures of Children! With 25ans

On September 13th, we invited a cartoonist Cocco Kashiwaya and held an art workshop with the children at the KEF headquarters office in Ebisu. While being interviewed for 25ans magazine, children completed their self-portraits that would be seen around the world in a long canvas that was laid on the floor, and then they drew pictures from their own imagination.



### Cube Tissue Is Available

ASKUL (B2B website) and LOHACO (for personal) are now selling cube tissue with new design. 3% of sales are paid to KIDS EARTH FUND for royalties.



Each website to purchase of cube tissue is as follows:

[LOHACO (for personal)]  
[http://lohaco.jp/product/9642800/?int\\_id=dai-tai\\_itemdetail](http://lohaco.jp/product/9642800/?int_id=dai-tai_itemdetail)

[ASKUL (B2B website)]  
<http://www.askul.co.jp/p/9642800/>

### New Art Designs Available at Amana Images

Amana Images, the stock photo company, has been supporting KIDS EARTH FUND's effort by converting our children's artwork into digital data for various creative purposes. They currently have 200 of our children's work in stock, and out of their sales, the royalty is donated to KEF.

Check out more details on their official website at <http://amanaimages.com/topics/kef/?rtm=sy>



### SMBC Charity Concert "A Toy Box of Masterpieces"

The 9th anniversary SMBC Charity Concert, "A Toy Box of Masterpieces" took place at the Kioi Hall on Sunday, June 8th. A total profit of 435,875 yen was collected by the attendees, proceeds from handmade 'eco-friendly pot cleaner' by SMBC bank clerk volunteers, and the earnings of the KIDS EARTH FUND charity goods. Proceeds from the event benefit the children in Tohoku, Cambodia, and Vietnam through KIDS EARTH FUND.



### Mondelez Japan's "JOY-KATSU" Volunteer Work

Approximately 30 volunteers from Mondelez Japan helped us at the KEF headquarters office with our administrative work, including sorting out the children's paintings and mailing out our newsletters. Mondelez Japan has been proactively seeking out the ways to make a positive and responsible contribution to the society, and those volunteers were dispatched as a part of their employee-participatory program in their corporate initiatives.



### Grand Hyatt Tokyo, Circle of LOVE

Grand Hyatt Tokyo is holding a charity program, "Circle of LOVE" as a part of continual support for Tohoku to deliver a chain of love to children in Tohoku for Christmas. In this program, approximately 5% of the special accommodation fee (a 5% discount from the usual amount) is donated to KIDS EARTH FUND. There will be collection boxes at the events, and a portion of the proceeds from the ornaments made from recycled wine corks will also be donated. Please visit the charity program during this period. Period: Middle of November - December 25th



### Charity Lessons

We hold a charity flower lesson and a charity gift-wrapping lesson every month at our KEF headquarters office. A part of your lesson fee will be donated. We look forward to your active participation!

### Flower Lessons

Instructor: Ms. Naoko Masuda  
14:30 - 16:00 Thursday, November 6  
14:30 - 16:00 Thursday, December 4  
Lesson Fee: 10,800 yen



### Gift-Wrapping Lessons

Instructor: Ms. Wakana Nakao  
13:30 - 15:30 Wednesday, November 5  
13:30 - 15:30 Wednesday, December 10  
13:30 - 15:30 Wednesday, January 14, 2015  
Lesson Fee: 6,000 yen

