

Charity Auction Party

We are pleased to inform you that the KIDS EARTH FUND's Charity Auction Party will be held at Ark Hills Club Akasaka on February 20th, 2015. Proceeds from this party will be used for children's art materials, educational expenses and the expansion of the facilities for KIDS EARTH FUND. We are looking forward to seeing you at the party.

Date: Friday, February 20th, 2015 **Time:** 7:00pm to 9:00pm **Place:** Ark Hills Club Akasaka, the Club Room

37F East Wing, ARK Mori Building,
1-12-32 Akasaka, Minato-ku, Tokyo, 107-6090

Ticket: 6,000 yen *Payment in advance*

Party Style: Cocktail Party **Dress Code:** Artistic

If you are interested in attending this party, please send us your name and your contact information via email [info@kidsearthfund.jp] or FAX [03-5449-3962].

Bank Information / Payee:

Bank of Mitsubishi Tokyo UFJ, Ebisu branch, Regular account, #1661426

If you have any questions, please feel free to contact us anytime:

info@kidsearthfund.jp or 03-5449-8161

Charity Christmas Cards 2014

In cooperation with support by the MS & AD Unison Smile Club, KIDS EARTH FUND released Charity Christmas cards in 2014. MS & AD Unison Smile Club is a social action program at MS & AD Insurance group. Mr. Tadashi Hashidate helped design the cards featuring three kinds of pictures that were drawn by children in Watari-cho (Miyagi), Russia, and China. 8,928 cards were sold in 2014, and the card revenues and donations successfully amounted to 1,666,288 yen. We offer our sincere thanks to all supporters' warm cooperation. Proceeds will be appropriated for continued support for children in the Tohoku disaster area, former Yugoslavia, Vietnam, Cambodia, as well as Syrian refugee children.



White Angel Project 2014 at Tamagawa Takashimaya Shopping Center

The 13th annual White Angel Project was held at Tamagawa Takashimaya Shopping Center. This year, the gallery exhibited a gigantic, five meter-long artwork created by the students from Ohkuma Junior High School (Watari-cho, Miyagi prefecture), along with the paintings made by children from many countries around the world. A photo spot and several charity collection boxes had been set up in the venue since November 25th, and the donations added up to 231,086 yen by Christmas Day, December 25th. As the proceeds from sales of charity goods were 52,100 yen, the total amount of contributions turned out to be 283,186 yen.

The donations will be used to support the children at KIDS EARTH HOMES in Tohoku, Vietnam and Cambodia.



Charity Wrapping Lesson

On Wednesday, November 5th, we held the charity wrapping lesson at the KIDS EARTH FUND headquarters office. We dressed up the two bottles that have been prepared with beautiful wrapping. Some part of the lesson fee will be donated to KIDS EARTH FUND. Instructor: Wakana Nakao

Ms. Nakao, an instructor, also volunteered at the Christmas charity wrapping events, and helped wrap the Christmas presents for kids at our headquarters office and the Barclays office.



Charity Flower Lessons

We held the monthly charity Flower lessons at the KIDS EARTH FUND headquarters office on Thursdays, November 6th and December 4th. We made a bouquet with plenty of cockscomb, dahlia and roses in November, and Mini Christmas tree in December. Some part of the lesson fee will be donated to KIDS EARTH FUND.

[Next Flower lesson]

Instructor: Naoko Masuda

Date: Thursday, February 5th, 14:30-16:00

Fee: 10,800 yen



Follow us on facebook and twitter.



-Kids Helping Kids-

<http://www.facebook.com/KidsEarthFund>



@Kids Earth Fund

Kids Earth Fund Shibuya-ku Ebisu 3-25-2 Tokyo, Japan 〒150-0013 TEL:03-5449-8161 / FAX:03-5449-3962
E-mail: info@kidsearthfund.jp URL : <http://www.kidsearthfund.jp/> Twitter : @KidsEarthFund



農場 / Farm
ネリシャ・オルヴィアナ / Nerisha Orviana
インドネシア / Indonesia

KIDS EARTH HOME Project

キッズ・アース・ホームプロジェクト

KIDS EARTH FUND Cambodia

527 kids are studying at the elementary school in poor region southeast 50 km away from Phnom Penh city now. We had a workshop to draw their own dreams. "I want to be a doctor," "I want to be a teacher," they said. All of them said they wanted to help people. In school, they don't have enough learning devices, such as a pencil and notebook, as well as toys for small kids, and especially textbook of Science and mathematics are badly off.

Now 53 kids are living in orphanage in Phnom Penh City. Owner sold the land suddenly, and the kids had to move to a new place. The support has been cut off, so we must manage the land rent, staff salaries, the education costs and food for 53 kids. Under this sad situation that they might be expelled anytime, they show us smile when they saw the bright paintings from Japan.



KIDS EARTH HOME Vietnam

The free educational facilities for street children and poor kids who cannot attend school become an elementary school with 130 students now.

We had the workshops to draw their favorite things on paper bag. Cooperating and piling up open paper bags with everyone, we made a castle to make their dream come true. They said they wanted to send paintings to Japanese people who always cheer them up, so they drew very powerful dragon. Some kids are studying Japanese in volunteer. We donated art supplies and toys, pencils and candies, etc



KIDS EARTH HOME Croatia

On Tuesday, December 9th, we had a workshop at KIDS EARTH HOME Croatia where the children drew pictures with a Christmas theme. After the war, KIDS EARTH HOME Croatia had been moved three times, and now only 80 of the 2,097 people in the town have a job. This is a scar that still remains from the war. Now, KIDS EARTH HOME Croatia has been rebuilt in Vrginmost, keeping active through support from Japanese postal savings.



Art Workshop Held in KIDS EARTH HOME Tohoku

We held an art workshop at KIDS EARTH HOME Tohoku. 25 children joined in this event. They gripped painting tools well and enjoyed drawing many wonderful paintings of their favorite things or something about Christmas.



Workshop Held at Yoshida Child House

A workshop was held in Yoshida Child House on November 14th, 2014. The children painted something related to Christmas. Yoshida Child House had been moved to a prefabricated house after the Great East Japan Earthquake, but was recently restored to its original location. The children joined in the event and enjoyed telling stories after school.



Christmas Party Held in KIDS EARTH HOME Tohoku

Thanks to the support of Grand Hyatt Tokyo, we held a Christmas Party at KIDS EARTH HOME Tohoku. Approximately 80 children enjoyed decorating Christmas tree with the ornaments sent from children of Nishimachi International School. They also received Christmas presents from Santa Claus.



KIDS EARTH CAR Project

キッズ・アース・カープロジェクト

Workshop at Children's Wards

A painting workshop was offered for children at the hospital. Those children, faced with health and medical treatment every day, enjoyed painting in the workshop.

<Workshops offered in November and December, 2014>
Kanagawa Children's Medical Center: November 26th, December 1st
Tokyo Jikei University Hospital: November 11th, December 9th



Christmas Project 2014

-Christmas Presents for Children-

Every year around Christmas, KIDS EARTH FUND carries out a project to provide gifts to the children at hospitals and special facilities in Japan. With all of your support, we have been able to deliver Christmas presents to more than 1,000 children living in 18 different locations throughout Japan, in places such as children hospitals, child centers, special schools and the Tohoku area. We truly appreciate your kind involvement in providing gifts, wrapping materials, and volunteering in wrapping up gifts to make them all look festive and wonderful.

Presents provided by:
CALBEE, Inc.
Character Research Institute Co., Ltd
OLIVE des OLIVE Co., Ltd
Mr. Hideo Suzuki
Ms. Fumie Muraoka
Ms. Chiya Yokohori

Wrapping materials provided by:
The Pack Corporation
SHIMOJIMA Co., Ltd
TOKYO ART Co., Ltd



The Opening Ceremony "Circle of LOVE" at Grand Hyatt Tokyo

On November 13th, an opening ceremony for the Christmas charity program was held at Grand Hyatt Tokyo. We held a workshop with children from Nishimachi International School, Tokyo. It was the fourth time as a part of continuous supports for Tohoku. We made reindeer ornaments with used corks which were provided by the hotel, and wrote Christmas cards to children in Tohoku. The Christmas tree was decorated with them. These ornaments and cards were sent to children in Tohoku by Grand Hyatt Tokyo and KIDS EARTH FUND after the event.



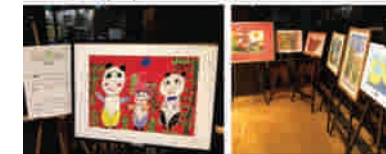
The Collaboration Night Dior x KIDS EARTH FUND

The collaboration party of Dior and KIDS EARTH FUND was held at an exhibition hall of Ginza Esprit Dior. Approximately 100 guests attended this event, contributing to KEF by purchasing Christmas cards with the pictures designed by children. These contributions amounted to 143,860 yen. We would like to thank everyone for their understanding and warm support.



Children's Art Exhibition at ECOM Surugadai

From November 27th to December 26th, pictures of "animals" and "plants" which were painted by children all over the world were exhibited at ECOM Surugadai. ECOM Surugadai is the space managed for the community by Mitsui Sumitomo Insurance.



Sumitomo Mitsui Banking Corporation Christmas Wrapping Volunteer

Approximately 30 participants from Sumitomo Mitsui Banking Corporation and Sumitomo Mitsui Financial Group came to KIDS EARTH FUND headquarters office as volunteers, and helped us with wrapping Christmas presents. These Christmas presents were sent to the Japanese children's wards, schools for children with special needs, and children in Tohoku by KIDS EARTH FUND.



Jagabee - Cheese Potato Flavor Sold for a Limited Time Only

Calbee uses pictures by KIDS EARTH FUND to package of Jagabee - Cheese Potato Flavor. The product has been sold at shops, not including convenience stores, up to middle of March. A part of the proceeds goes to KIDS EARTH FUND. Hope you try it.



Now on Sale: nagomi-NATULURE Aromatic Caffeine-less Coffee

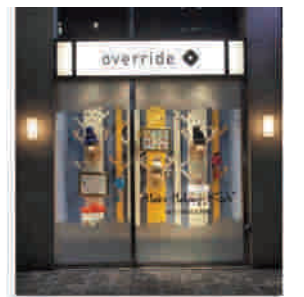
nagomi-NATULURE has released Aromatic Caffeine-less Coffee - Coffee Bags (tetra-type tea bags) since October 1st, 2014. Pictures by KIDS EARTH FUND are used as the product packages. A part of the proceeds goes to KIDS EARTH FUND. Hope you enjoy it.



<http://www.nagomi-natulure.com/product/569>

Hats Helping Kids - Hats Deliver Smiles to Kids -

Override, a hat specialty store, sold knit caps and earmuffs in collaboration with KIDS EARTH FUND for a limited time. At two of Override shops, KIDS EARTH FUND paintings were displayed.



Limited Edition Christmas KIDS EARTH FUND Shopping Bags Given Away

Limited edition Christmas shopping bags, with KIDS EARTH FUND's paintings, were given away by ROSEMARY, a total beauty shop group, and BLUEMATE, CO., LTD., a casual wear merchandiser.

